

Economically efficient and convenient POS terminal

APEXA CX



Excellent performance of APEXA CORE

APEXA CX is a POS optimized for retail and hospitality by improving cost-effectiveness with fast speed, durability, and low power consumption.



Simple dual monitor setup and easy maintenance

DisplayPort mini DP port is available for easy utilization of dual monitors without adjusting CMOS power settings.



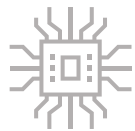
I/O port improvement (two 9-pin serial DB9 standard)

By providing two DB9 ports, it is easy to connect peripheral devices.



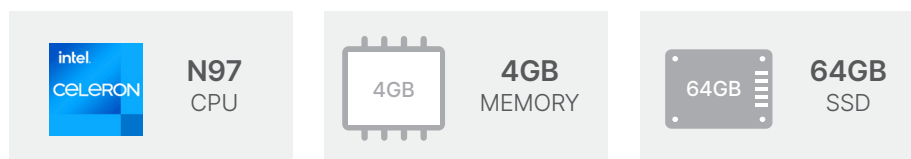
Excellent cost-effectiveness

Posbank offers high specification and sophisticated design at a competitive price.

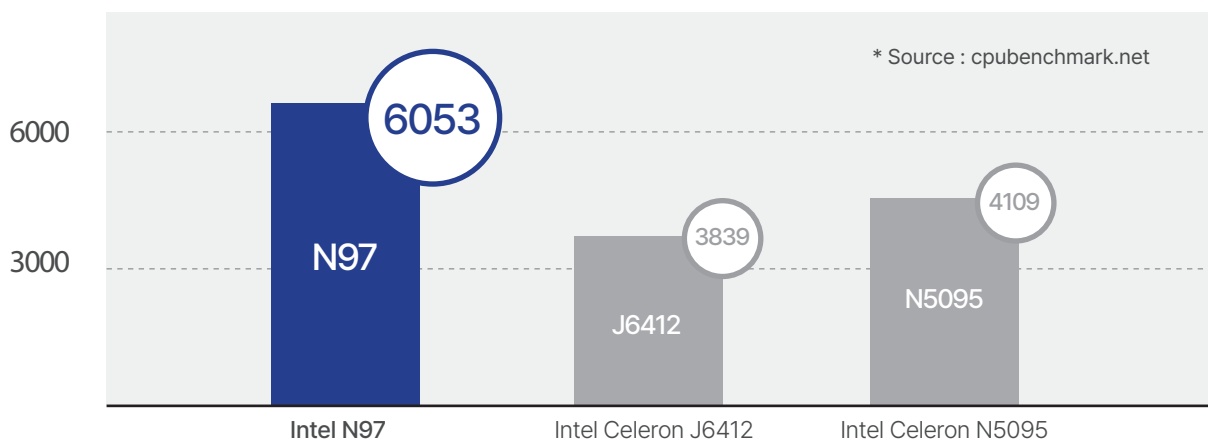


Improved performance N97 (3.6Ghz) 4G /64G, Speaker(factory option)

Intel N97, which uses Intel's 12th generation Alder Lake, can perform a variety of powerful functions required in the retail and restaurant industries.



POS CPU performance comparison



Specification

System	
Processor	Intel® Processor N97 6M Cache, up to 3.60 GHz
Chipset	Intel® Alder Lake-N
Memory	4GB Standard, DDR4 3200 MT/s, Socket 1 x SODIMM (Max. 16GB)
Storage	SATA 3 (6Gb/s) 2.5 inch SSD 64GB, Support AHCI
Operating System	Windows 10 version 21H1 or higher
Audio	HD Audio Codec
Display	
Type	15" TFT LCD, LED Backlight
Resolution	1024 × 768
Brightness	350 cd/m ² (typ.)
Touchscreen	Projected Capacitive Touch
Interface	
Display	Displayport (MiniDP/ With Power Output)
USB	Rear 2 (USB 3.0 × 2), Back 4 (USB 2.0 × 4) 1 (Reserved for MSR/SCR/i-Button), RJ-45
Serial	External 6 (COM1, Dsub-9, with 5V/12V Power Output on 9 Pins, BIOS) (COM2~3 RJ-45 , Full Signal) (COM4 MiniDP, Only TX/RX, 12V Power Output, Reserved for CDP) (COM5, Dsub-9, Full Signal) (COM6 RJ-45, Only TX/RX, 5V Power Output, Reserved for MSR)
Cash Drawer Port	Cash Drawer Port(GPIO Communication) (RJ-12 6 Pins) x 1
LAN	Gigabit Ethernet x 1 (RJ-45)
Audio	Line-out x 1
Power DC-IN	4 Pin DIN Jack
Extension Slot	M.2 2242 for SSD (Factory Option)

Power	
Power Supply	Adapter 12V, 5A
Physical & Environmental	
Operating Temperature	0°C ~ 60°C at 10% to 90% Humidity
Storage Temperature	-20°C ~ 80°C at 10% to 90% Humidity
Dimensions (W x H x D)	351 × 206 × 307.5 (mm), 13.8 × 12.0 × 8.11 (in)
Packing Dimensions (W x H x D)	435 × 485 × 165 (mm), 17.1 × 19.1 × 6.5 (in)
Net Weight	4.41kg, 9.72 lbs
Packing Weight	5.5kg, 12.12 lbs
Certification	KC, CE, FCC
Color	Dark Gray, White
Options & Peripherals	
2nd Displays	9.7", 15" LCD Display, 1024 × 768, Optional Touchscreen
Customer Display	10.1" LCD Display, 1280 × 800, Optional Touchscreen
Storage	2.5 inch SSD 128GB, HDD 500GB, 1TB M.2 2242-D2-M(SATA or NVMe)
Magnetic Stripe Reader	Comply with ISO 7811, Support 1 & 2 & 3 Track
Smart Card Reader	EMV Level 1
Dallas	Dallas i-button Reader
Fingerprint	Yes
Wall Mount Kit	VESA-Compatible, 75 × 75(mm), 100 × 100(mm)
Serial Conversion Cable	RJ-45 to D-sub 9
Speaker	1 × 1W (MONO) (Factory Option)
TPM	Support

* Specifications may change without prior notice.

Interface

